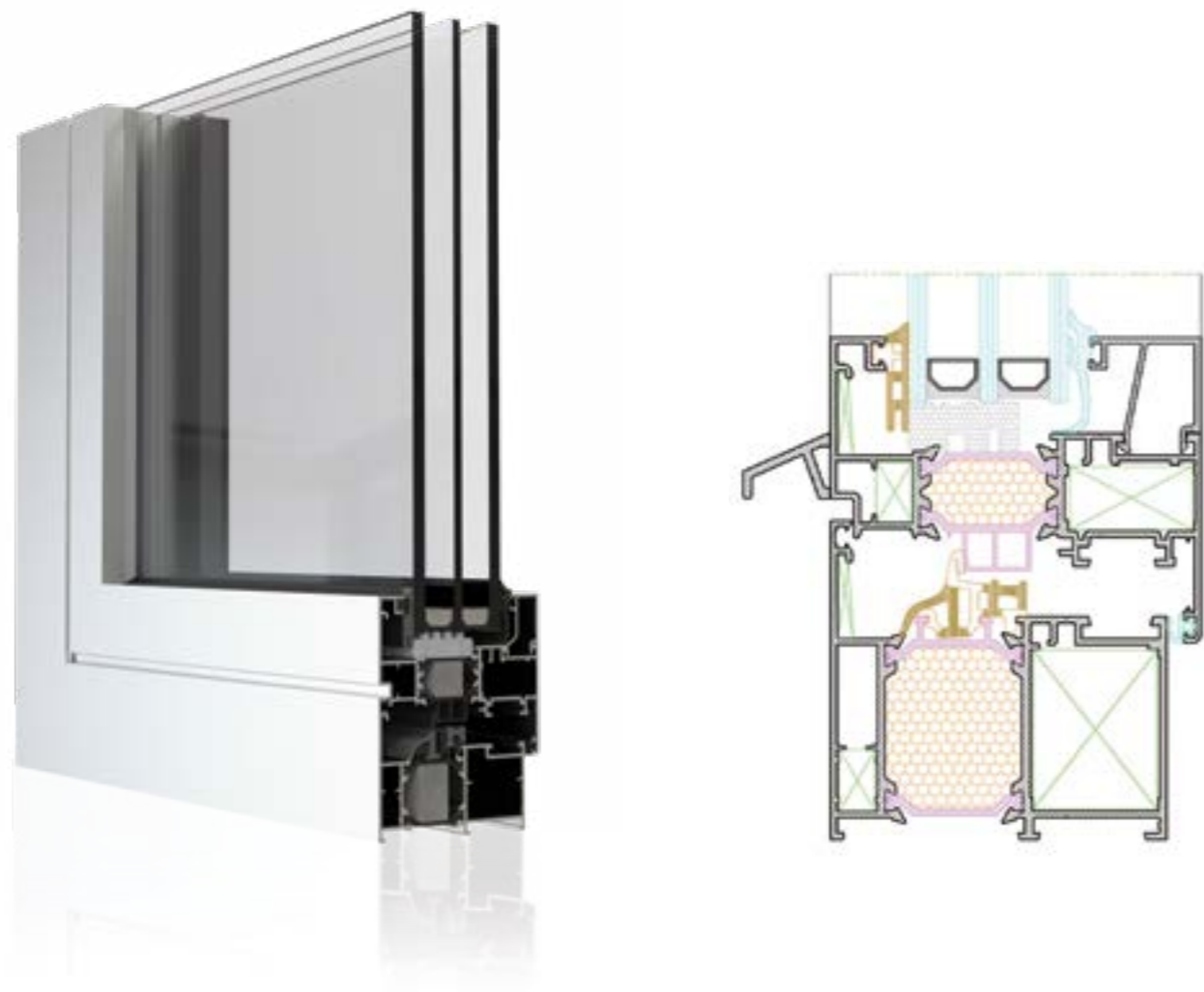


## Sustavi za prozore i vrata

# PE85tt

Windows and doors systems

Fenster- und Türsysteme



### TEHNIČKE KARAKTERISTIKE / TECHNICAL CHARACTERISTICS / TECHNISCHE EIGENSCHAFTEN

Dubina okvira / Frame depth / Rahmentiefe	77 mm
Dubina krila / Wing depth / Flügeltiefe	85 mm
Mjera preklopa / Flap measure / Überlappungsmaß	8 mm
Širina ispune / Filling width / Ausfüllungsbreite	30-63 mm
Poliamidi / Polyamides / Polyamide	31,6 mm
Toplinska svojstva / Thermal properties / thermische Eigenschaften - HRN EN 10077-1:2017	*Uw≥0,9 W/m <sup>2</sup> K

\*Dobivene vrijednosti za staklo / Obtained values for glass / Ermittelte Werte für Glas - Ug=0,5 W/m<sup>2</sup>K

Sveučilišna klinička bolnica / University Clinical Hospital / Universitätsklinikum  
Mostar (BA)



Tvrtka iFORM / iFORM Company / Unternehmen iFORM  
Široki Brijeg (BA)

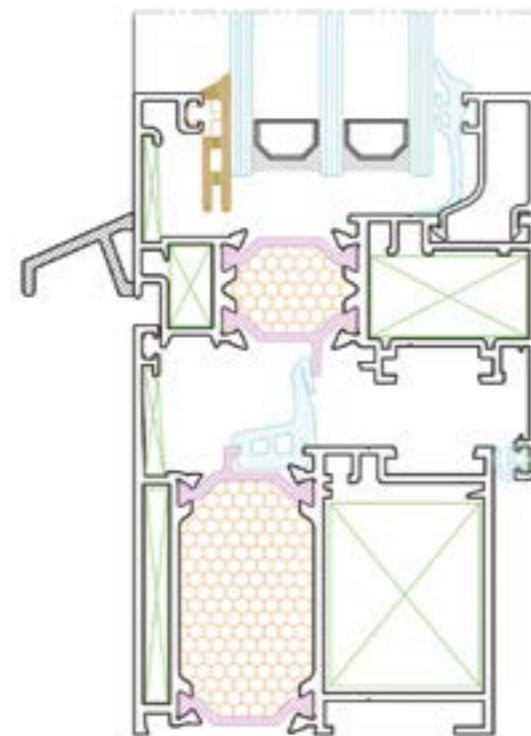


## Sustavi za prozore i vrata

# PR65tt

Windows and doors systems

Fenster- und Türsysteme



### TEHNIČKE KARAKTERISTIKE / TECHNICAL CHARACTERISTICS / TECHNISCHE EIGENSCHAFTEN

Dubina okvira / Frame depth / Rahmentiefe	65 mm
Dubina krila / Wing depth / Flügeltiefe	73 mm
Mjera preklopa / Flap measure / Überlappungsmaß	8 mm
Širina ispune / Filling width / Ausfüllungsbreite	21-50mm
Poliamidi / Polyamides / Polyamide	24,5 mm
Toplinska svojstva / Thermal properties / thermische Eigenschaften - HRN EN 10077-1:2017	*Uw≥1,1 W/m <sup>2</sup> K

\*Dobivene vrijednosti za staklo / Obtained values for glass / Ermittelte Werte für Glas - Ug=0,5 W/m<sup>2</sup>K

