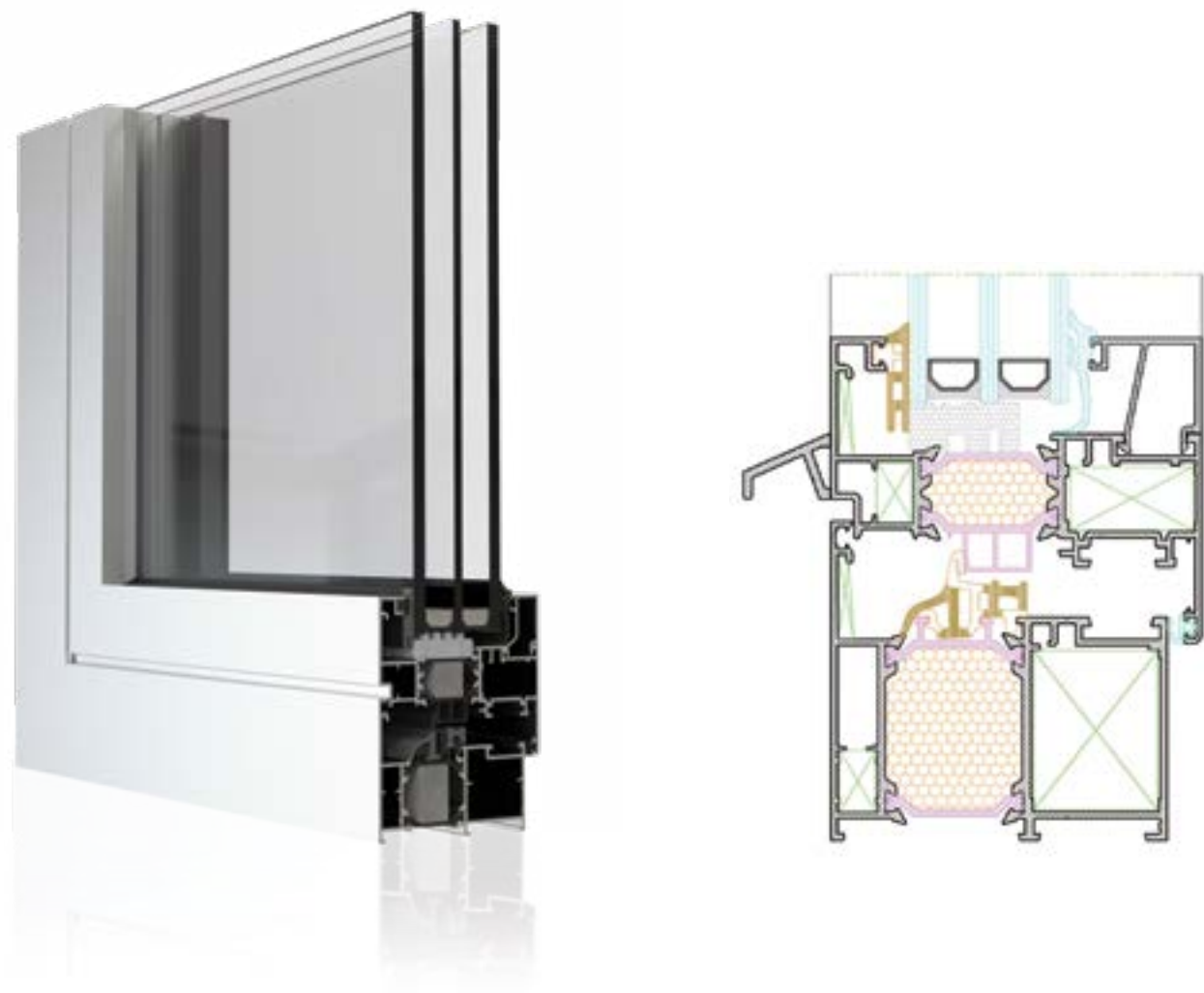


## Sustavi za prozore i vrata

# PE85tt

Windows and doors systems

Fenster- und Türsysteme



### TEHNIČKE KARAKTERISTIKE / TECHNICAL CHARACTERISTICS / TECHNISCHE EIGENSCHAFTEN

|   |                            |
|---|----------------------------|
| Dubina okvira / Frame depth / Rahmentiefe   | 77 mm                      |
| Dubina krila / Wing depth / Flügeltiefe   | 85 mm                      |
| Mjera preklopa / Flap measure / Überlappungsmaß   | 8 mm                       |
| Širina ispune / Filling width / Ausfüllungsbreite   | 30-63 mm                   |
| Poliamidi / Polyamides / Polyamide  | 31,6 mm                    |
| Toplinska svojstva / Thermal properties / thermische Eigenschaften - <b>HRN EN 10077-1:2017</b> | *Uw≥0,9 W/m <sup>2</sup> K |

\*Dobivene vrijednosti za staklo / Obtained values for glass / Ermittelte Werte für Glas - Ug=0,5 W/m<sup>2</sup>K

Sveučilišna klinička bolnica / University Clinical Hospital / Universitätsklinikum  
Mostar (BA)



Tvrtka iFORM / iFORM Company / Unternehmen iFORM  
Široki Brijeg (BA)



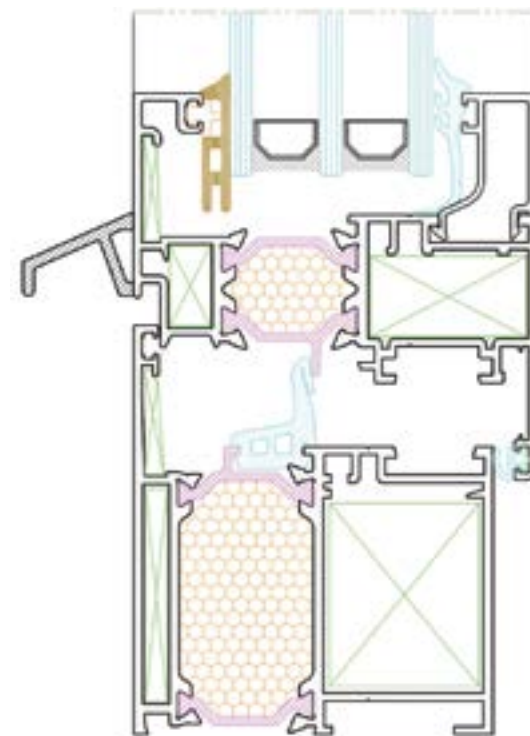


## Sustavi za prozore i vrata

# PR65tt

Windows and doors systems

Fenster- und Türsysteme



### TEHNIČKE KARAKTERISTIKE / TECHNICAL CHARACTERISTICS / TECHNISCHE EIGENSCHAFTEN

|  |                            |
|--|----------------------------|
| Dubina okvira / Frame depth / Rahmentiefe  | 65 mm                      |
| Dubina krila / Wing depth / Flügeltiefe  | 73 mm                      |
| Mjera preklopa / Flap measure / Überlappungsmaß  | 8 mm                       |
| Širina ispune / Filling width / Ausfüllungsbreite  | 21-50mm                    |
| Poliamidi / Polyamides / Polyamide   | 24,5 mm                    |
| Toplinska svojstva / Thermal properties / thermische Eigenschaften - HRN EN 10077-1:2017 | *Uw≥1,1 W/m <sup>2</sup> K |

\*Dobivene vrijednosti za staklo / Obtained values for glass / Ermittelte Werte für Glas - Ug=0,5 W/m<sup>2</sup>K



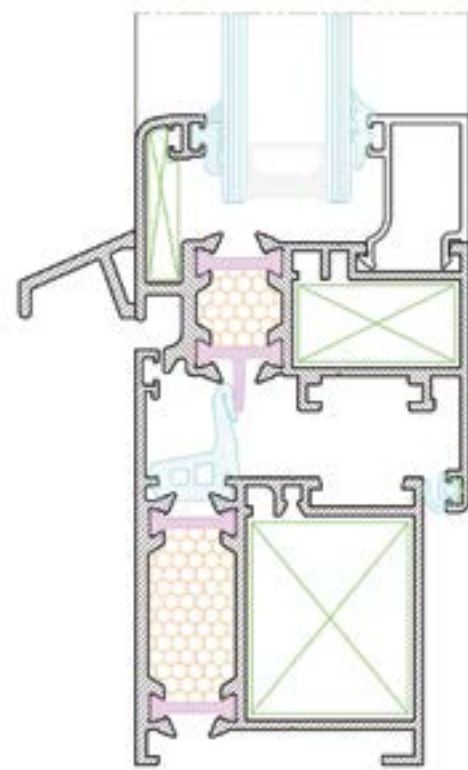


## Sustavi za prozore i vrata

# E50tt

Windows and doors systems

Fenster- und Türsysteme



### TEHNIČKE KARAKTERISTIKE / TECHNICAL CHARACTERISTICS / TECHNISCHE EIGENSCHAFTEN

|   |         |
|---|---------|
| Dubina okvira / Frame depth / Rahmentiefe         | 50 mm   |
| Dubina krila / Wing depth / Flügeltiefe           | 58 mm   |
| Mjera preklopa / Flap measure / Überlappungsmaß   | 8 mm    |
| Širina ispune / Filling width / Ausfüllungsbreite | 6-37 mm |
| Poliamidi / Polyamides / Polyamide                | 14,8 mm |



Veteranski centar / Veterans Centre / Veteranenzentrum  
Daruvar (HR)