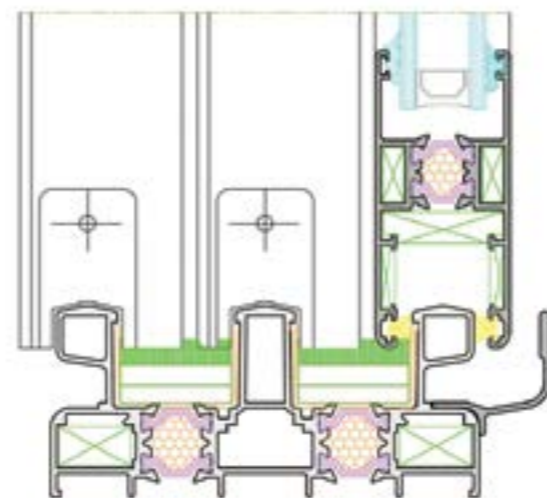


# E65Stt

Sliding systems  
Schiebesysteme



## TEHNIČKE KARAKTERISTIKE / TECHNICAL CHARACTERISTICS / TECHNISCHE EIGENSCHAFTEN

Dubina okvira / Frame depth / Rahmentiefe (3 Staze / Lines / Spuren)	111 mm
Dubina okvira / Frame depth / Rahmentiefe (2 staze / track / spuren)	65 mm
Dubina krila / Wing depth / Flügeltiefe	35 mm
Širina ispune / Filling width / Ausfüllungsbreite	14-24 mm
Poliamidi / Polyamides / Polyamide	16-18 mm

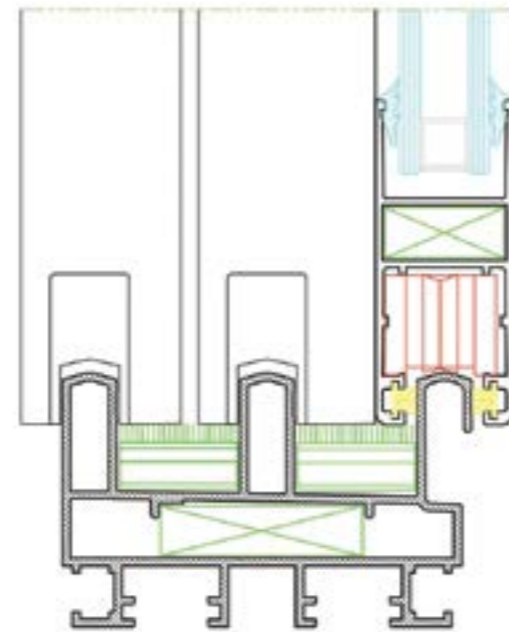


Vila Vir / Villa Vir / Villa Vir  
Vir (HR)

## Klizni sustavi

# E560S

Sliding systems  
Schiebesysteme



### TEHNIČKE KARAKTERISTIKE / TECHNICAL CHARACTERISTICS / TECHNISCHE EIGENSCHAFTEN

Dubina okvira / Frame depth / Rahmentiefe (4 Staze / Lines / Spuren)	117 mm
Dubina okvira / Frame depth / Rahmentiefe (3 Staze / Lines / Spuren)	81 mm
Dubina okvira / Frame depth / Rahmentiefe (2 Staze / Lines / Spuren)	45 mm
Dubina krila / Wing depth / Flügeltiefe	28 mm
Širina ispune / Filling width / Ausfüllungsbreite	10-20 mm



Peperino restaurant  
Mostar (BA)



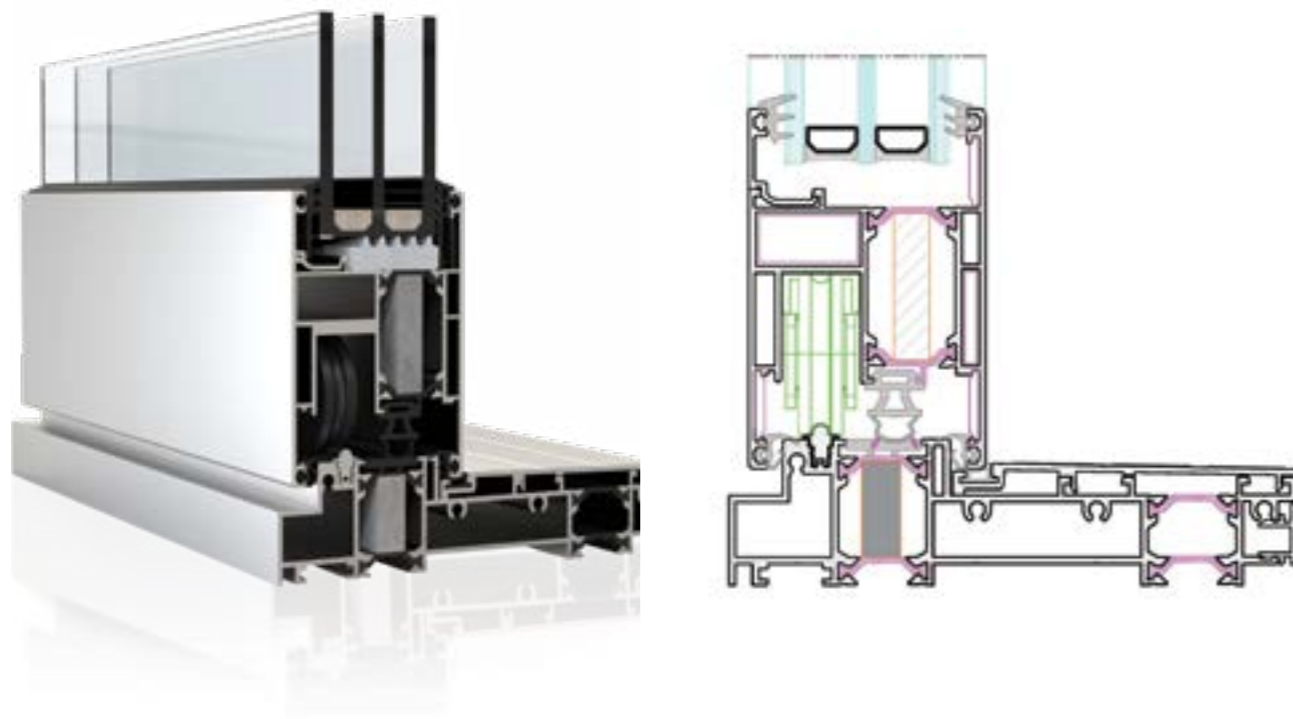
Big Ben caffe bar  
Široki Brijeg (BA)



# PK150tt

Lifting and sliding systems

Hebe-Schiebesysteme



## TEHNIČKE KARAKTERISTIKE / TECHNICAL CHARACTERISTICS / TECHNISCHE EIGENSCHAFTEN

Dubina okvira / Frame depth / Rahmentiefe	156 mm
Dubina krila / Wing depth / Flügeltiefe	65 mm
Širina ispune / Filling width / Ausfüllungsbreite	20-48 mm
Poliamidi / Polyamides / Polyamide	24,5 mm
Toplinska svojstva / Thermal properties / thermische Eigenschaften - <b>HRN EN 10077-1:2017</b>	*Uw≥1,0 W/m <sup>2</sup> K

\*Dobivene vrijednosti za staklo / Obtained values for glass / Ermittelte Werte für Glas - Ug=0,5 W/m<sup>2</sup>K

Stambena zgrada / Apartment building / Wohngebäude  
Zagreb (HR)



Stambeno-poslovna zgrada Oskar / Residential and commercial building  
Oskar / Wohn- und Gewerbegebäude Oskar  
Široki Brijeg (BA)

